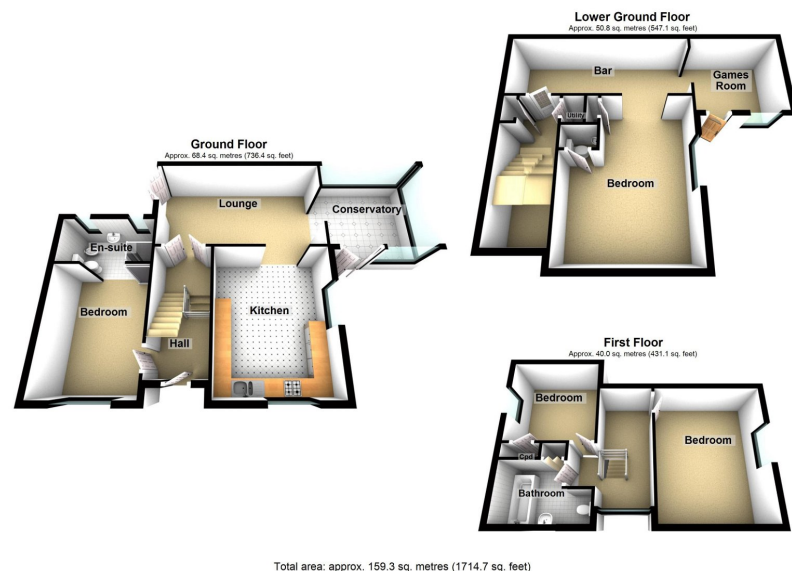




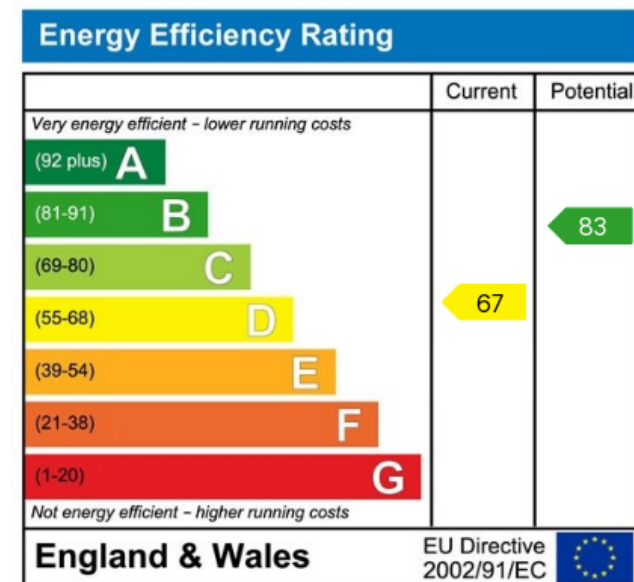
Annisfield Avenue, Greenfield, Saddleworth
£475,000

🛏 4 🍷 2 🛋 2





Occupying a corner plot within the heart of Greenfield Village is this large detached house. Phoenix House offers a unique opportunity to purchase a home within walking distance of two well rated Primary Schools (one rated outstanding by Ofsted) and also having beautiful walking routes on your doorstep.



Uppermill Office

35 High Street
Uppermill,
Saddleworth
OL3 6HS

Monday – Friday. 9am – 5pm
Saturday. 10am – 3 pm
uppermill@kirkham-property.co.uk
t: 01457 810 076
f: 01457 810 222

Out of hours telephone service
Monday – Thursday 8:30am – 7pm
Friday – 8:30am – 5pm
Saturday – Sunday 10am – 3pm