

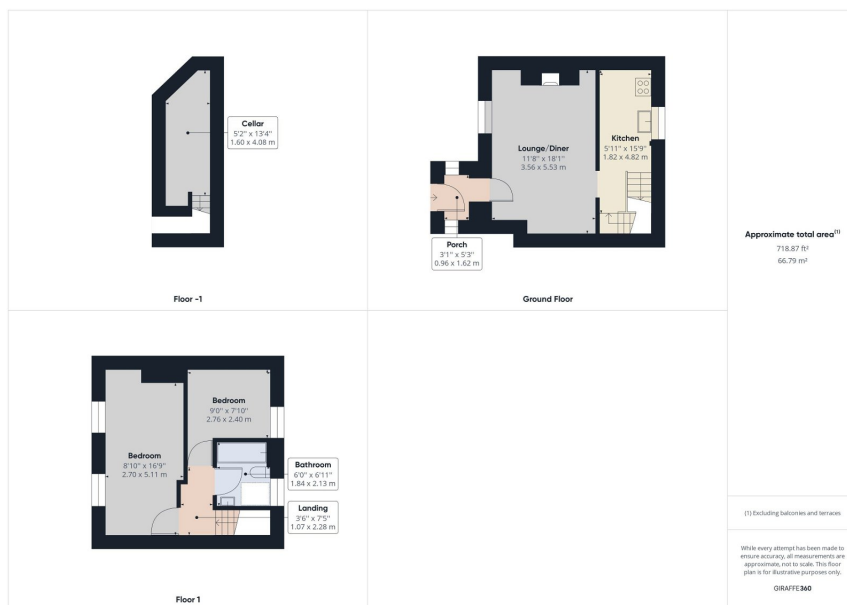


Village Green, Uppermill, Saddleworth

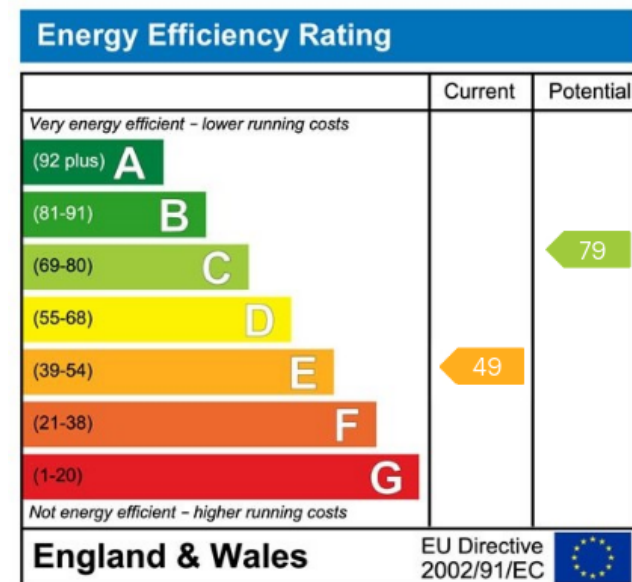
£235,000

🛏 2 🚿 1 🛋 1





Located just a two minute walk from Uppermill High Street is this stone end cottage. With a pleasing outlook onto the green and everyday amenities on your doorstep, this property is ideal for someone looking to downsize or a first purchase. The home has been presented to the market in walk-in condition and is being sold with no onward chain.



Uppermill Office

35 High Street
Uppermill,
Saddleworth
OL3 6HS

Monday – Friday. 9am – 5pm
Saturday. 10am – 3 pm
uppermill@kirkham-property.co.uk
t: 01457 810 076
f: 01457 810 222

Out of hours telephone service
Monday – Thursday 8:30am – 7pm
Friday – 8:30am – 5pm
Saturday – Sunday 10am – 3pm

www.kirkham-property.co.uk