





Huddersfield Road, Austerlands, Saddleworth

£137,000

🛏 2 🍳 1 🛋 1



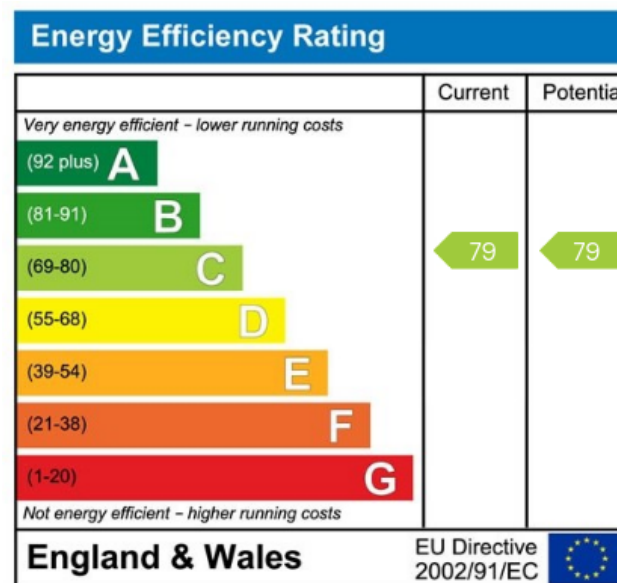
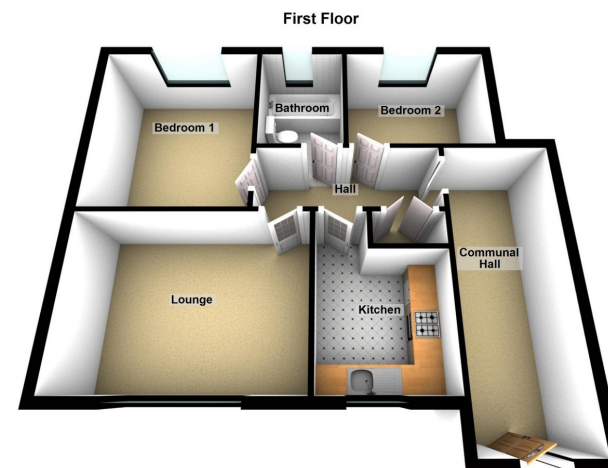
- Ground Floor Flat
- No Onward Chain
- Gas Central Heated
- Convenient Position For Transport Links
- Two Bedrooms
- Well Presented Throughout
- Off Road Parking
- Energy Rating C







Being sold with no onward chain is this two bedroom ground floor apartment with a modern décor throughout. Conveniently positioned for transport links to Oldham Town Centre along with all of the Saddleworth villages and benefitting from full double glazing & gas central heating.



### Uppermill Office

35 High Street  
Uppermill,  
Saddleworth  
OL3 6HS

Monday – Friday. 9am – 5pm  
Saturday. 10am – 3 pm  
uppermill@kirkham-property.co.uk  
t: 01457 810 076  
f: 01457 810 222

Out of hours telephone service  
Monday – Thursday 8:30am – 7pm  
Friday – 8:30am – 5pm  
Saturday – Sunday 10am – 3pm