





New Street, Lees, Oldham

£210,000

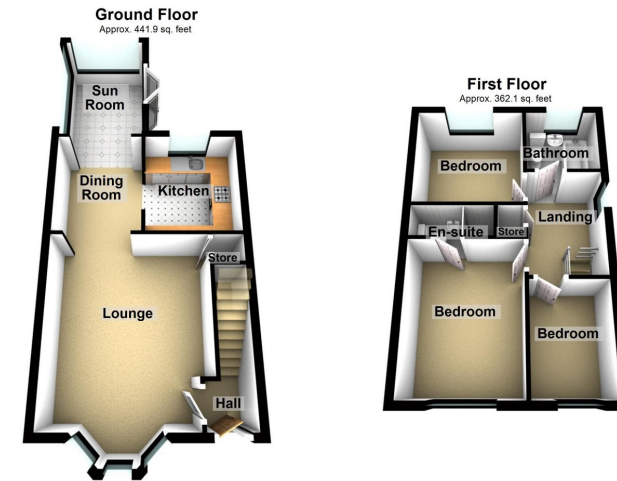
3 2 2





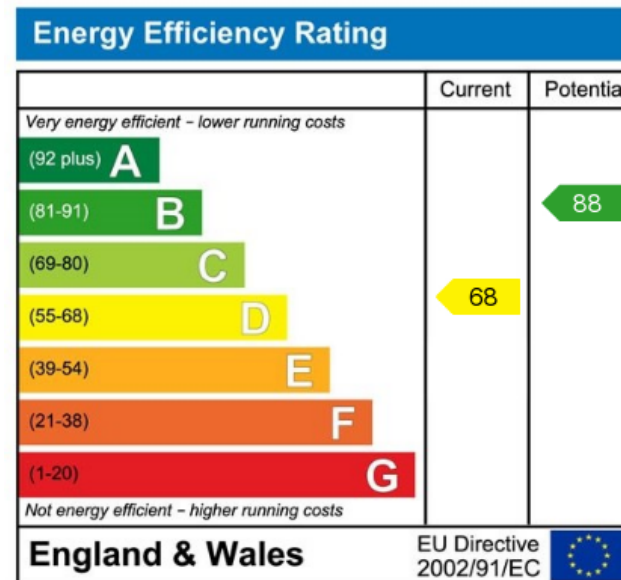
- Modern end town house
- Gloss kitchen with fitted appliances
- Well suited to first time buyers
- Close proximity to Primary Schools
- Three bedrooms (one of which En-Suite)
- Off road parking for two cars
- Amenities within a few minutes walk
- Energy rating D





Total area: approx. 804.0 sq. feet

Centrally positioned within the village of Lees is this modern end town house. Providing an abundance of amenities within a few minutes walk. The home has been well appointed by the current owners to create a walk-in condition property which is ideal for first time buyers or those looking to downsize.



#### Uppermill Office

35 High Street  
Uppermill,  
Saddleworth  
OL3 6HS

Monday – Friday. 9am – 5pm  
Saturday. 10am – 3 pm  
uppermill@kirkham-property.co.uk  
t: 01457 810 076  
f: 01457 810 222

Out of hours telephone service  
Monday – Thursday 8:30am – 7pm  
Friday – 8:30am – 5pm  
Saturday – Sunday 10am – 3pm