



37 Butterworth Way, Greenfield

£220,000

🛏 2 🚿 2 🚗 1

- First Floor Apartment
- Two Bedrooms
- Sought After Location
- Sought After Development
- Countryside Setting
- Close to Greenfield Train Station
- Allocated Parking Space
- EPC Rating - C

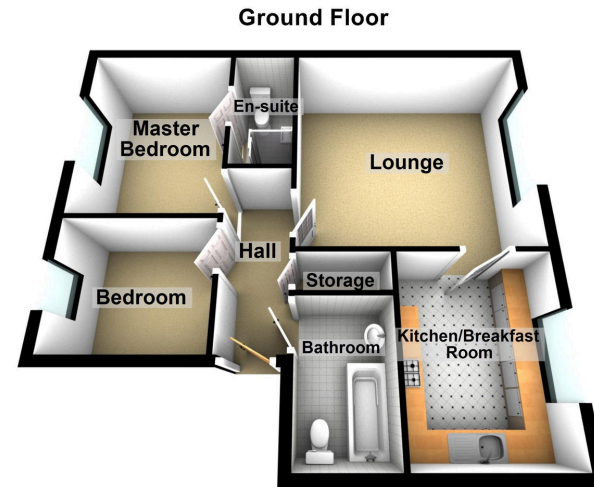


A rare opportunity to purchase a well proportioned First Floor Apartment in a sought after secluded development and location.

Butterworth Way is situated close to Greenfield Cricket Club, Friezland Bowling Club and Tame Valley Squash & Tennis Club as well as superb countryside walks such as the nearby Dovestone Reservoir. The property also provides convenient access to all local amenities including shops, good local schools and transport networks including the nearby train station.

The property's accommodation briefly comprises of:- Entrance Hall with large storage cupboard, Lounge, Kitchen/Breakfast Room, Master Double Bedroom with En-Suite, Bathroom and a further Bedroom with Gas Central Heating and uPVC Double glazing throughout.





Energy Efficiency Rating		
	Current	Potential
<i>Very energy efficient - lower running costs</i>		
(92 plus) A		
(81-91) B		
(69-80) C	77	79
(55-68) D		
(39-54) E		
(21-38) F		
(1-20) G		
<i>Not energy efficient - higher running costs</i>		
England & Wales	EU Directive 2002/91/EC	

Chadderton Office
 509 Middleton Road,
 Chadderton, Oldham,
 OL9 9SH

chadderton@kirkham-property.co.uk
 t: 0161 626 5688